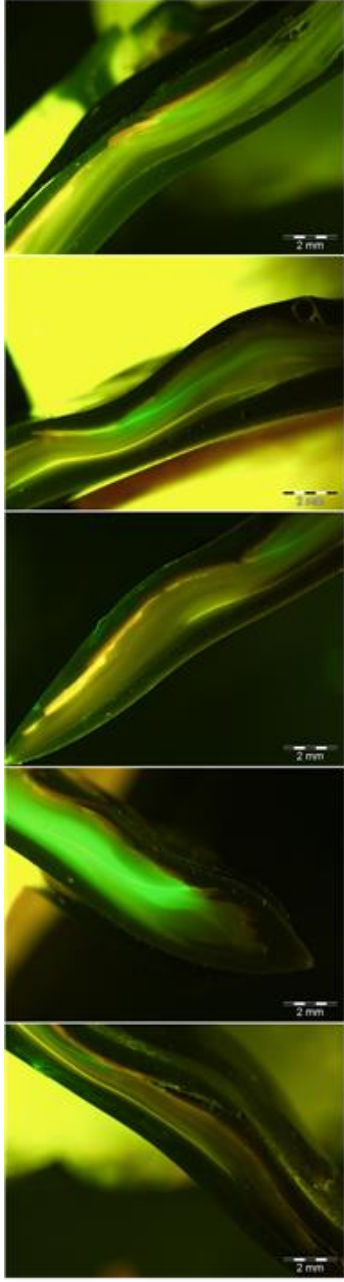


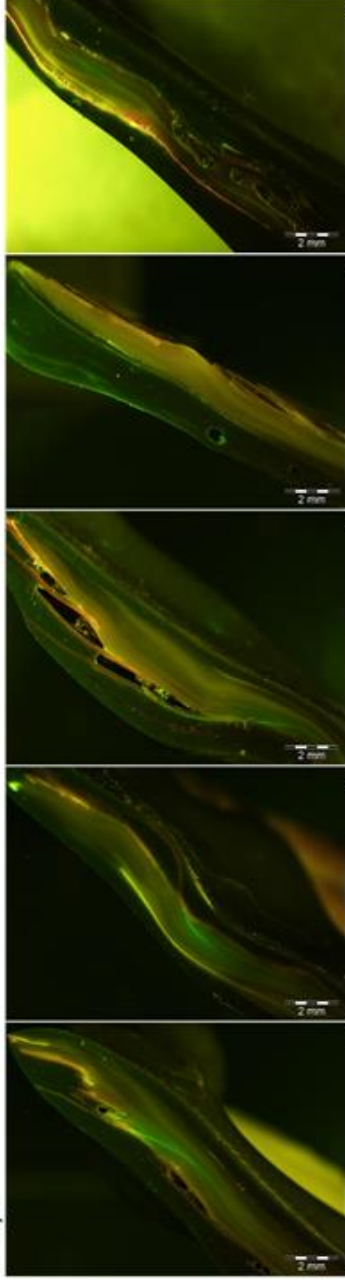
## Appendix

*Ostrea edulis* shell cross-section under fluorescent (left) and reflective (right) light. Staining was conducted for nine treatments with three different Calcein concentrations (100 mg l<sup>-1</sup>, 150 mg l<sup>-1</sup>, 200 mg l<sup>-1</sup>) and three immersion times (6 h, 12 h, 24 h). Additionally a Control treatment (0 mg l<sup>-1</sup>, 24 h) was conducted. *In-situ* fluorescence markings (green line) are visible under fluorescent light and corresponding to the growth line under reflective light. Additional disturbance lines interfere with the identification of growth lines.

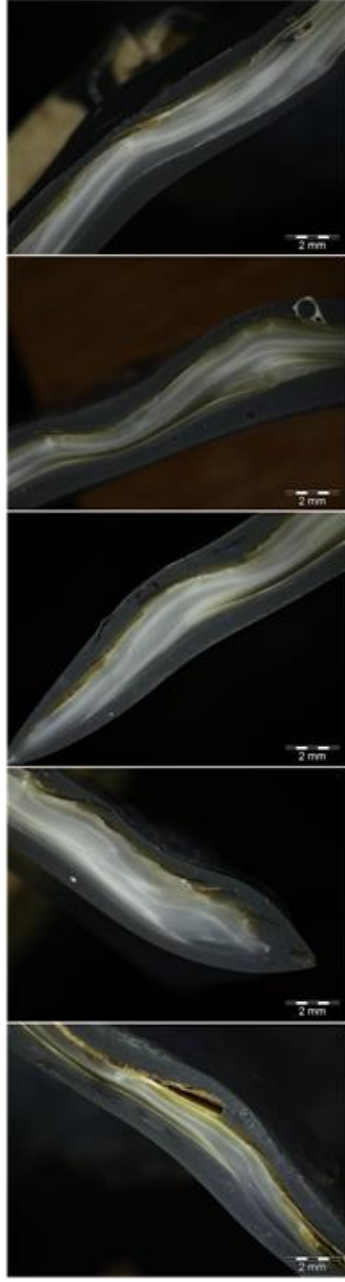


100\_06\_01  
100\_06\_02  
100\_06\_03  
100\_06\_04  
100\_06\_05

100/6

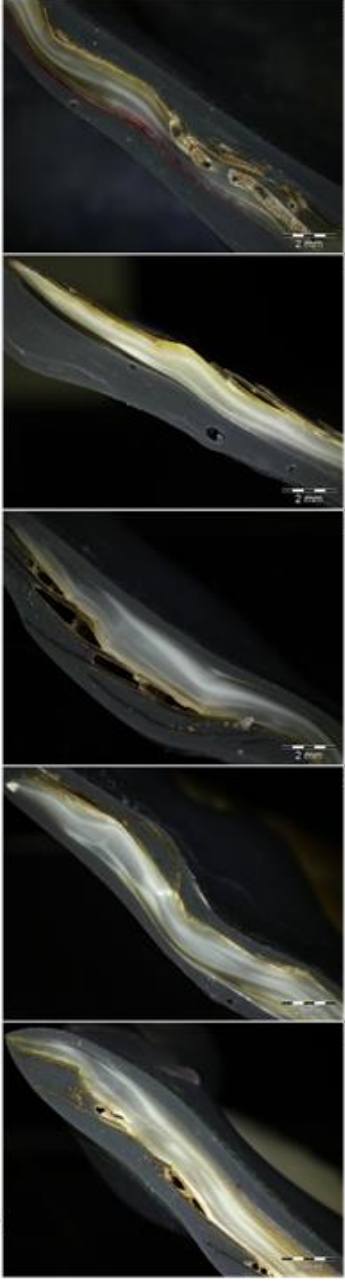


100\_06\_06  
100\_06\_07  
100\_06\_08  
100\_06\_09  
100\_06\_10

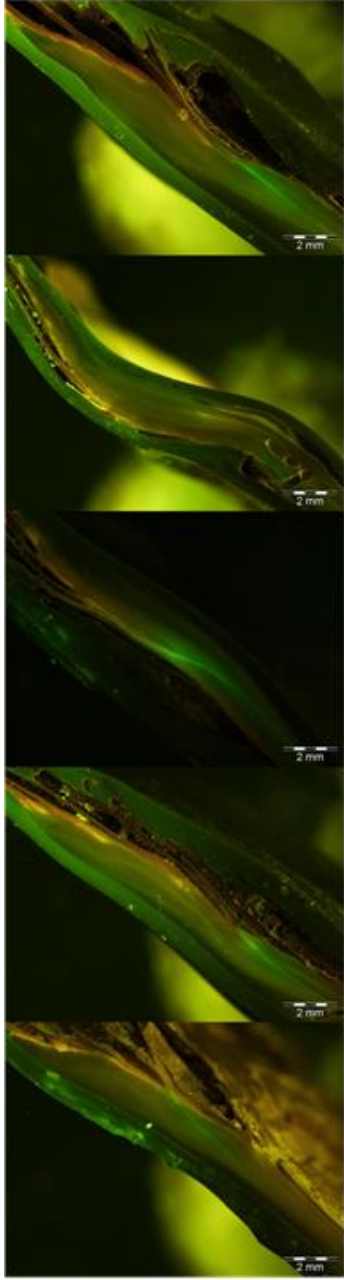


100\_06\_01  
100\_06\_02  
100\_06\_03  
100\_06\_04  
100\_06\_05

100/6



100\_06\_06  
100\_06\_07  
100\_06\_08  
100\_06\_09  
100\_06\_10



100\_12\_01

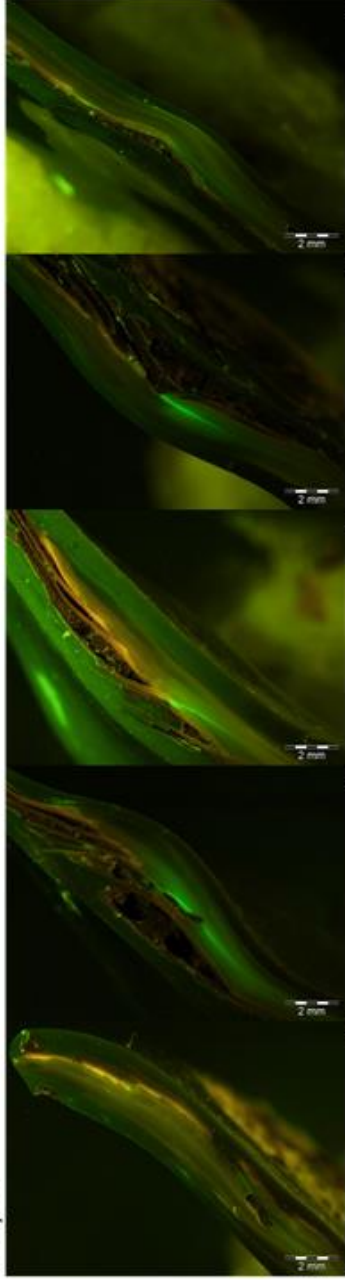
100\_12\_02

100\_12\_03

100\_12\_04

100\_12\_05

100/12



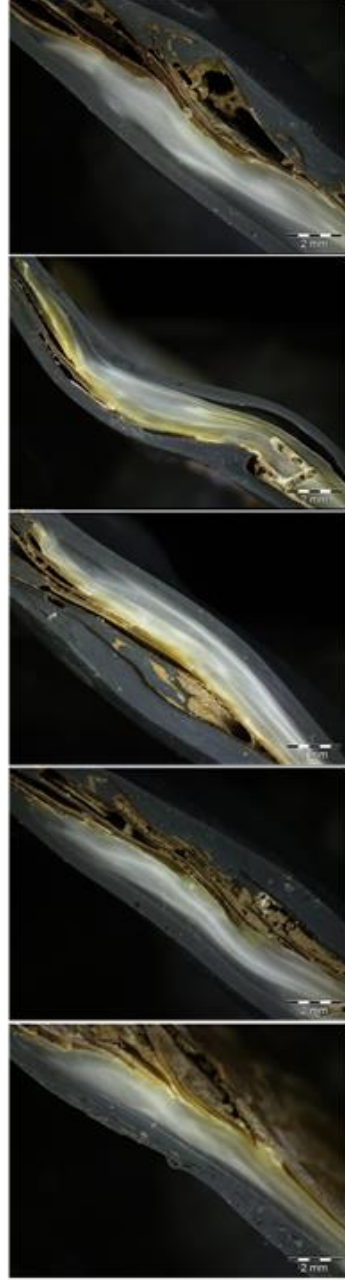
100\_12\_06

100\_12\_07

100\_12\_08

100\_12\_09

100\_12\_10



100\_12\_01

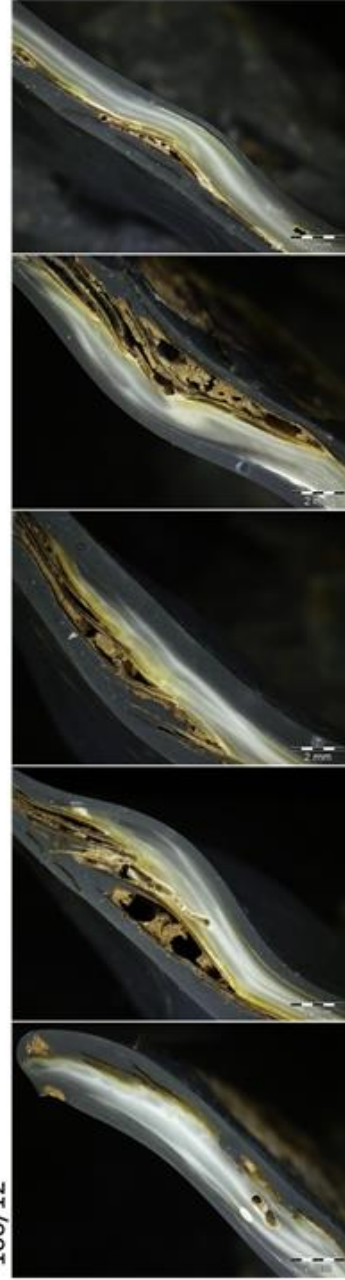
100\_12\_02

100\_12\_03

100\_12\_04

100\_12\_05

100/12



100\_12\_06

100\_12\_07

100\_12\_08

100\_12\_09

100\_12\_10



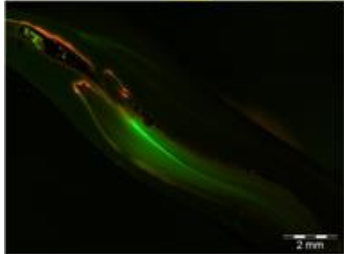
100\_24\_01



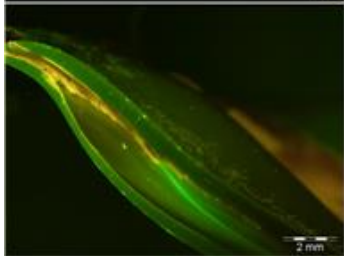
100\_24\_02



100\_24\_03

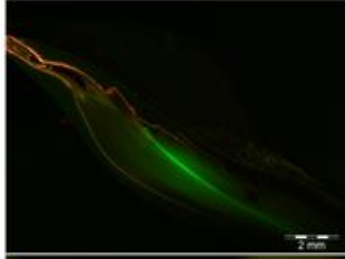


100\_24\_04



100\_24\_05

100/24



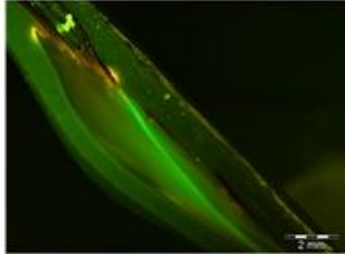
100\_24\_06



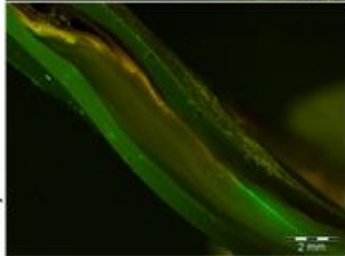
100\_24\_07



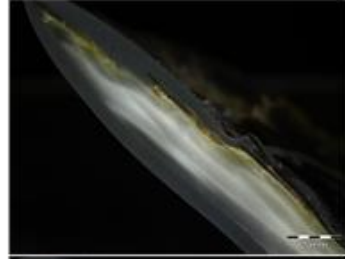
100\_24\_08



100\_24\_09



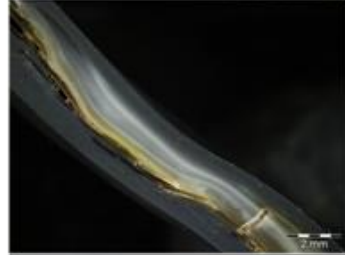
100\_24\_10



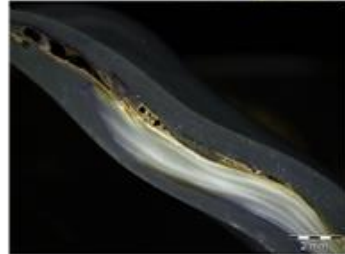
100\_24\_01



100\_24\_02



100\_24\_03



100\_24\_04



100\_24\_05

100/24



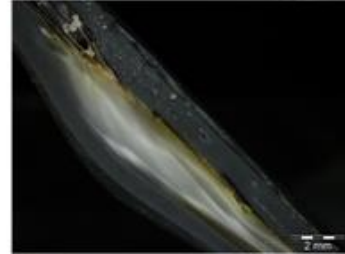
100\_24\_06



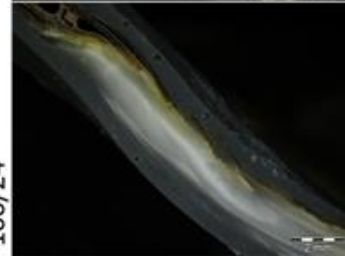
100\_24\_07



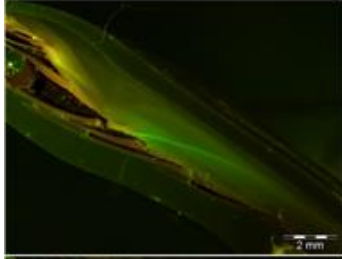
100\_24\_08



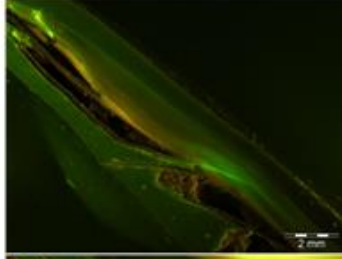
100\_24\_09



100\_24\_10



150\_06\_01



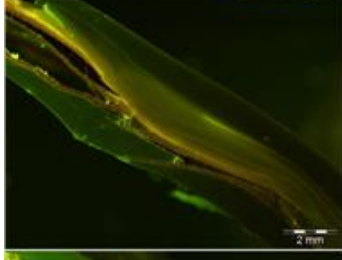
150\_06\_06



150\_06\_02



150\_06\_07



150\_06\_03



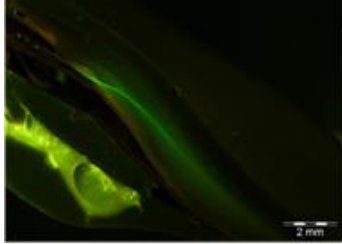
150\_06\_08



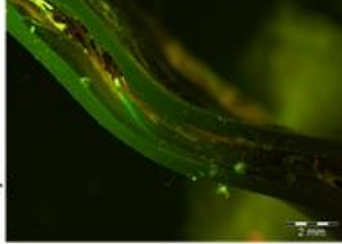
150\_06\_04



150\_06\_09



150\_06\_05



150\_06\_10

150/06



150\_06\_01



150\_06\_06



150\_06\_02



150\_06\_07



150\_06\_03



150\_06\_08



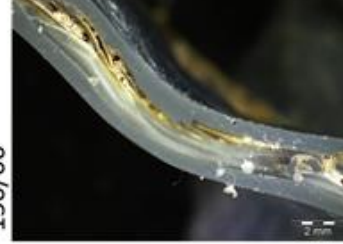
150\_06\_04



150\_06\_09



150\_06\_05

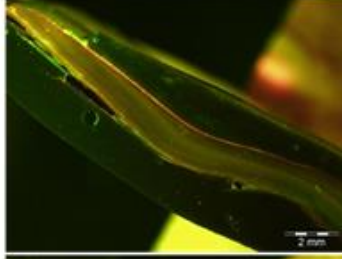


150\_06\_10

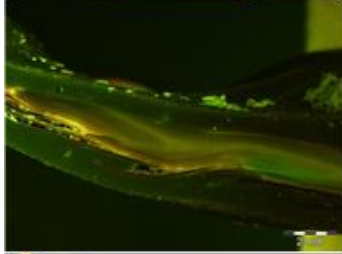
150/06



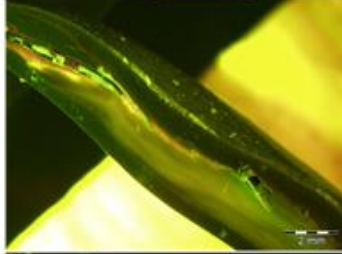
150\_12\_01



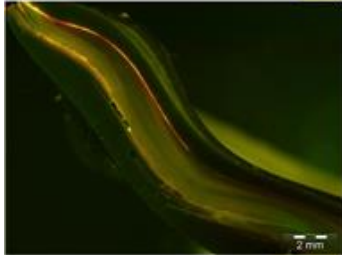
150\_12\_06



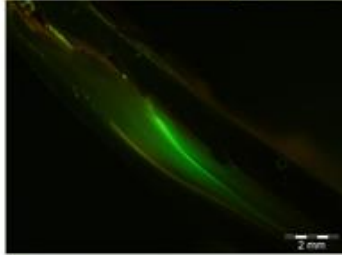
150\_12\_02



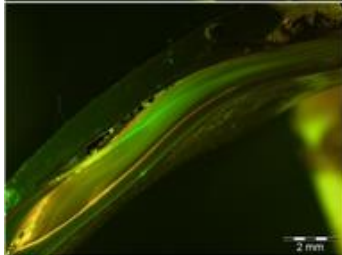
150\_12\_07



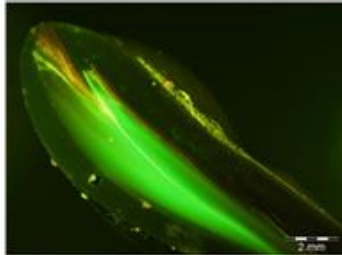
150\_12\_03



150\_12\_08



150\_12\_04



150\_12\_09



150\_12\_05



150\_12\_10

150/12



150\_12\_01



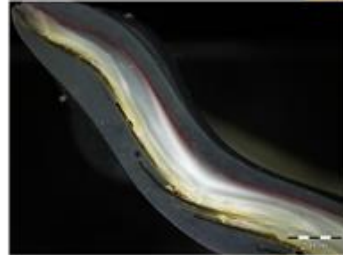
150\_12\_06



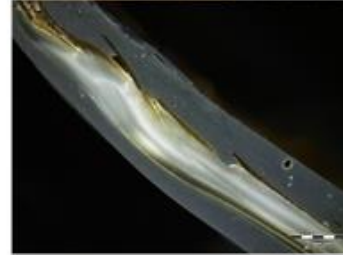
150\_12\_02



150\_12\_07



150\_12\_03



150\_12\_08



150\_12\_04



150\_12\_09



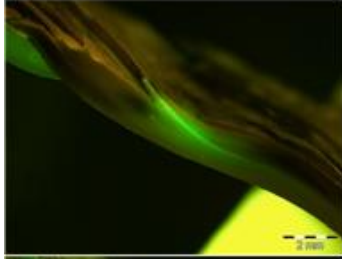
150\_12\_05



150\_12\_10

150/12

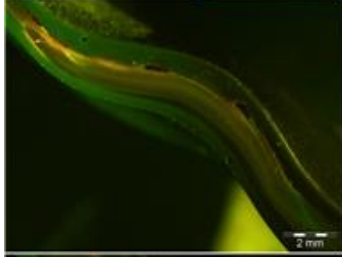




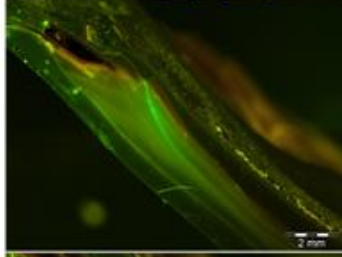
200\_06\_01



200\_06\_06



200\_06\_02



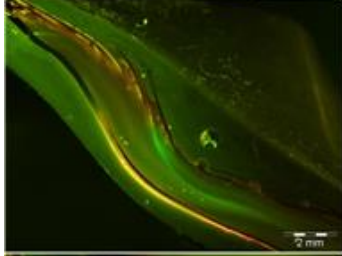
200\_06\_07



200\_06\_03



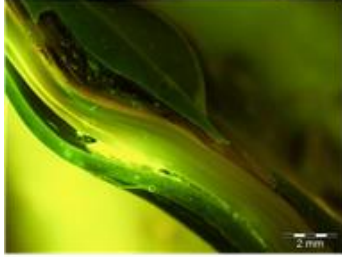
200\_06\_08



200\_06\_04



200\_06\_09

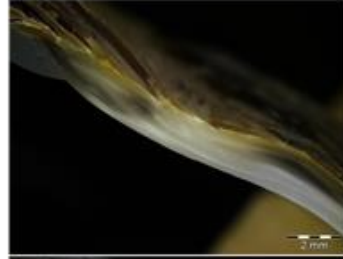


200\_06\_05

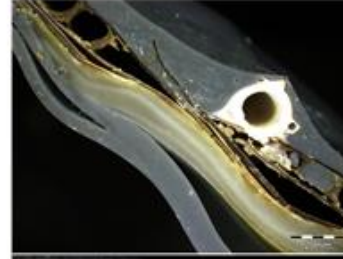


200\_06\_10

200/06



200\_06\_01



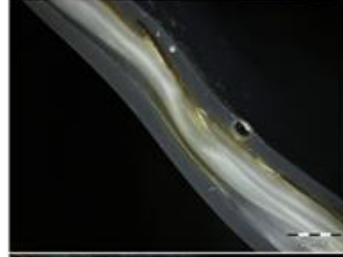
200\_06\_06



200\_06\_02



200\_06\_07



200\_06\_03



200\_06\_08



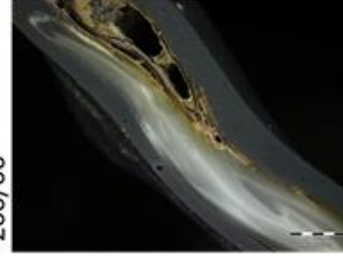
200\_06\_04



200\_06\_09



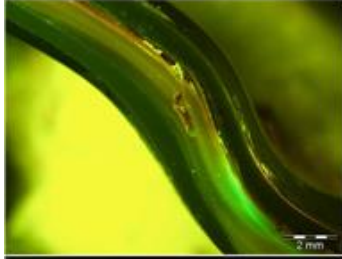
200\_06\_05



200\_06\_10

200/06

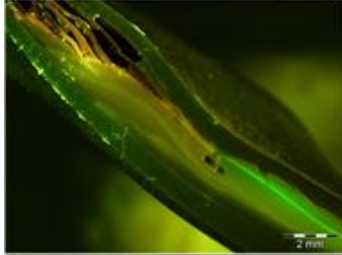




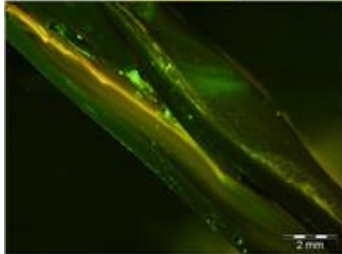
200\_12\_01



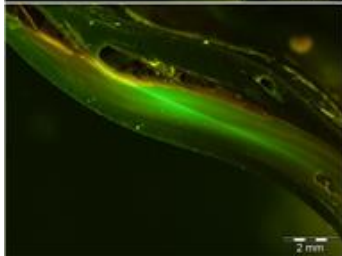
200\_12\_02



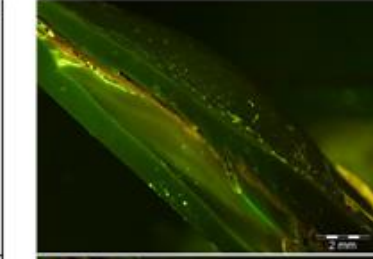
200\_12\_03



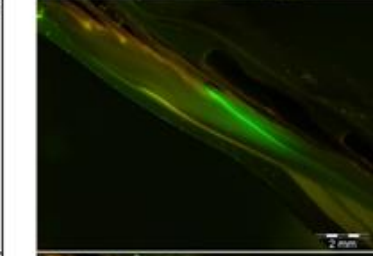
200\_12\_04



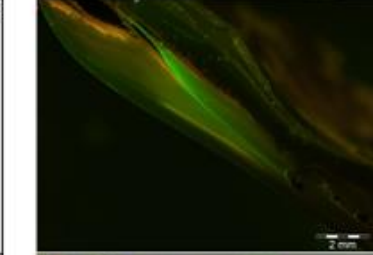
200\_12\_05



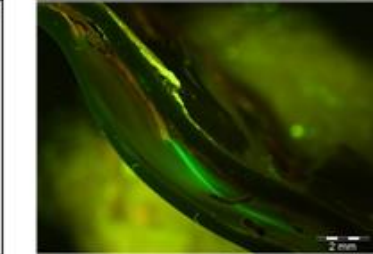
200\_12\_06



200\_12\_07



200\_12\_08

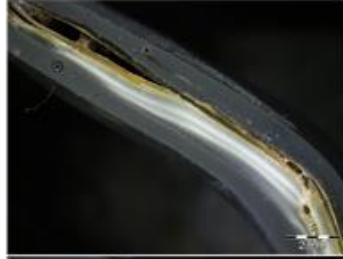


200\_12\_09



200\_12\_10

200/12



200\_12\_01



200\_12\_02



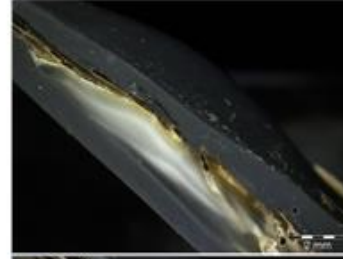
200\_12\_03



200\_12\_04



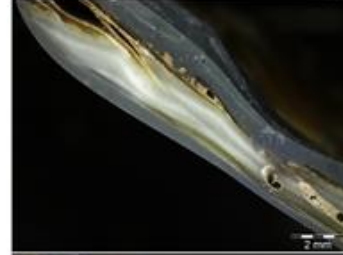
200\_12\_05



200\_12\_06



200\_12\_07



200\_12\_08

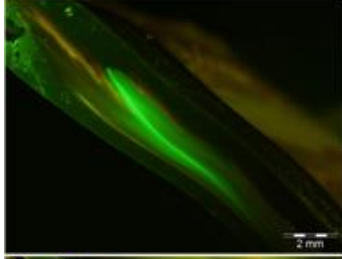


200\_12\_09

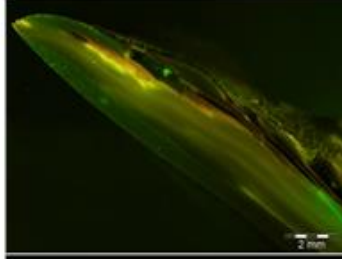


200\_12\_10

200/12



200\_24\_01



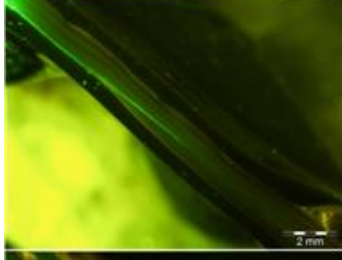
200\_24\_06



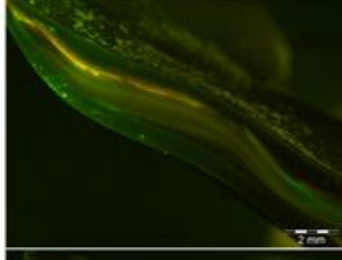
200\_24\_02



200\_24\_07



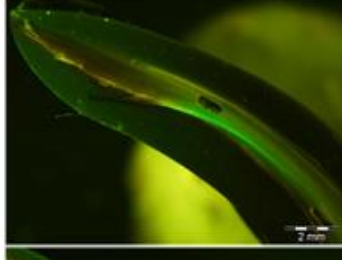
200\_24\_03



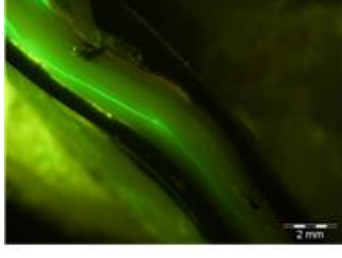
200\_24\_08



200\_24\_04



200\_24\_09

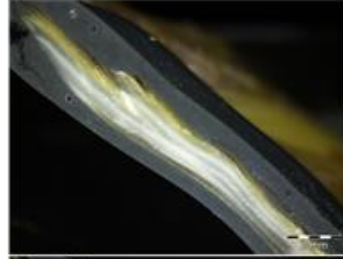


200\_24\_05



200\_24\_10

200/24



200\_24\_01



200\_24\_06



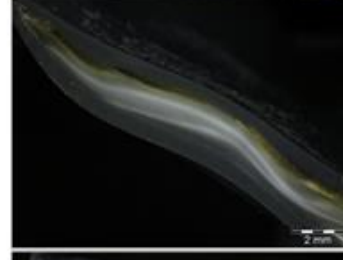
200\_24\_02



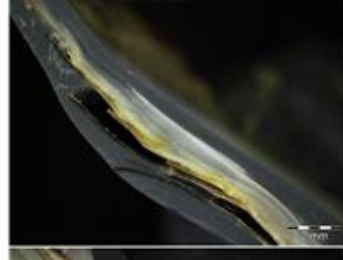
200\_24\_07



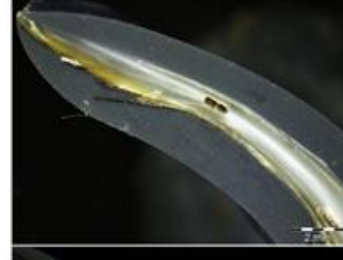
200\_24\_03



200\_24\_08



200\_24\_04



200\_24\_09

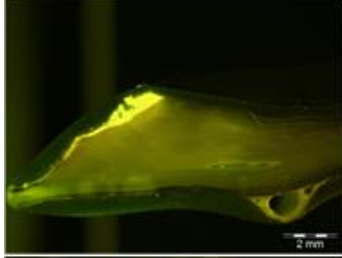


200\_24\_05

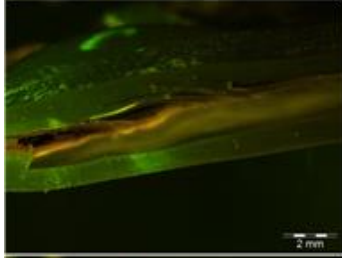


200\_24\_10

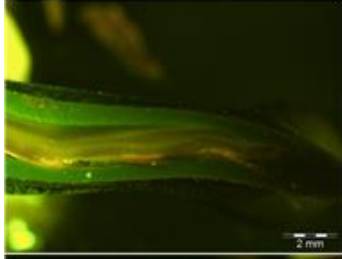
200/24



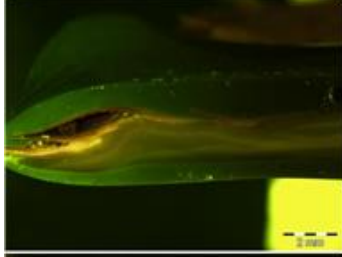
Control\_01



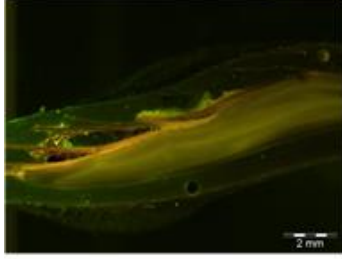
Control\_02



Control\_03



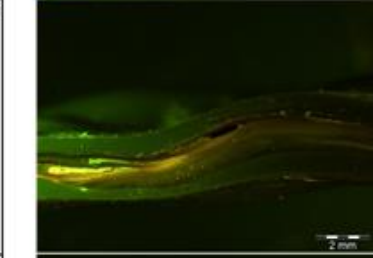
Control\_04



Control\_05



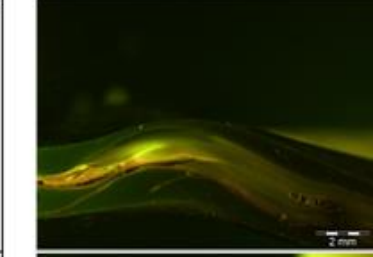
Control\_06



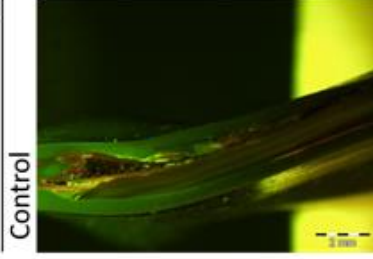
Control\_07



Control\_08



Control\_09



Control\_10

Control



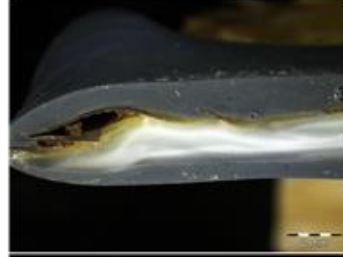
Control\_01



Control\_02



Control\_03



Control\_04



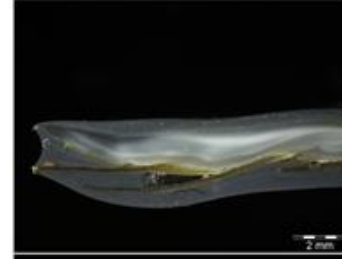
Control\_05



Control\_06



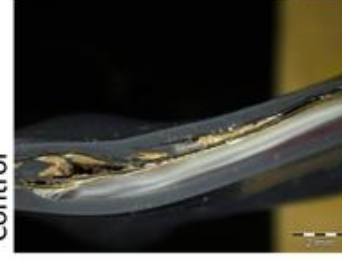
Control\_07



Control\_08



Control\_09



Control\_10

Control