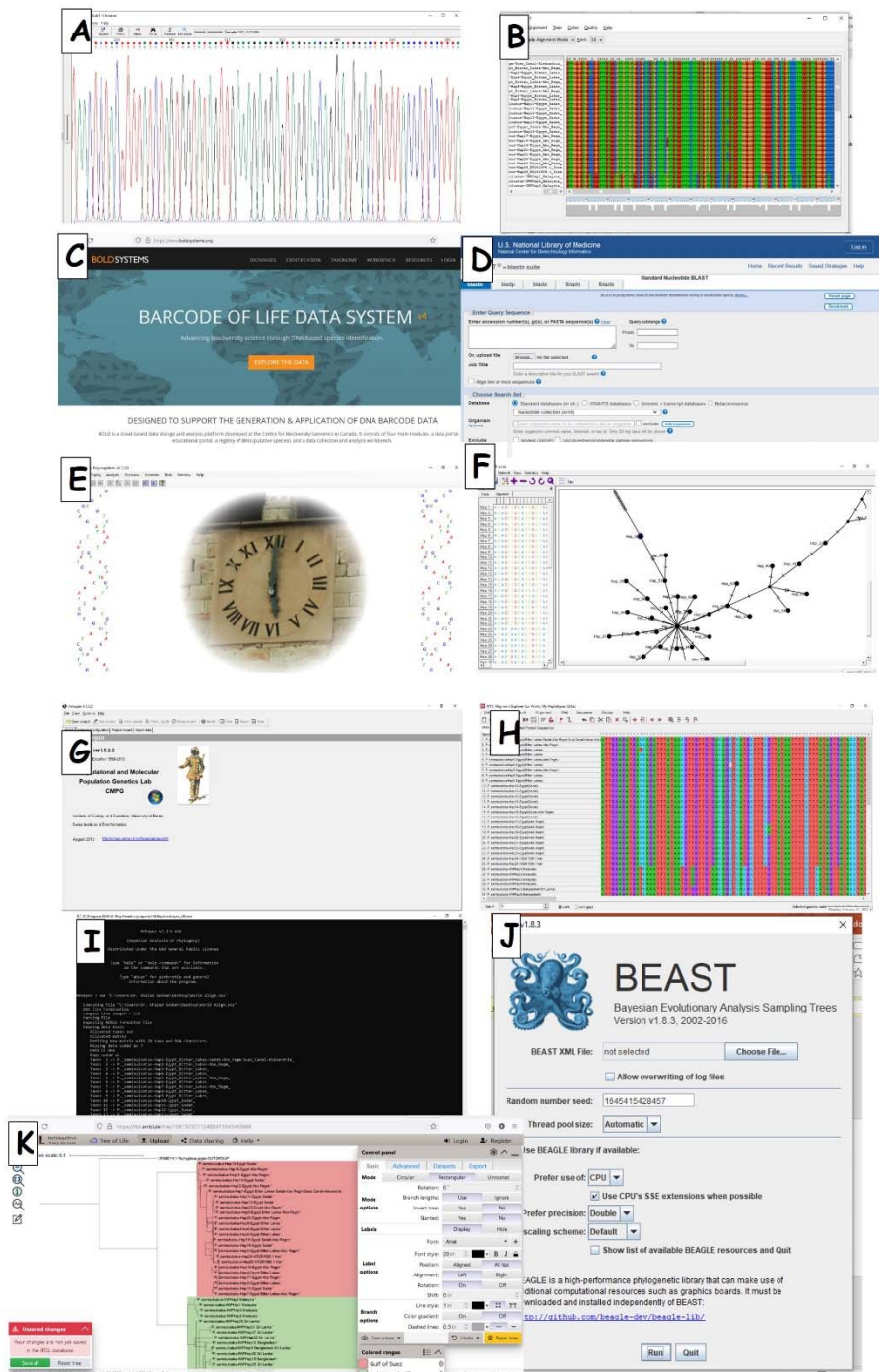


Supplementary material

Supplementary Figure A: Main software and platforms applied for COI sequences' data analyses in the present study: A: Chromas Lite 2.1, B: ClustalX2, C: IDS-BOLD, D: BLAST-GenBank, E: Dnasp6, F: PopArt 1.7, G: Arlequin 3.5.1.1., H: Mega11, I: MrBayes 3.2.1, J: BEAST, K:iToL.



Supplementary Figure A